

Central Bedfordshire Council
www.centralbedfordshire.gov.uk

Central
Bedfordshire

The Pledge

The Pledge to Children
and Young People in Care

Thank you to members of The CiCC for their input into the development and design of The Pledge Booklet.

This pocket pledge belongs to:

My review manager is called:

They can be contacted on tel:

My social worker is called:

They can be contacted on tel:

For further information please contact:

Marie Short, Participation Officer

 **0300 300 4881**

 **marie.short@centralbedfordshire.gov.uk**

The Pledge

CiCC
Giving Young People a Voice

The Pledge has been developed in partnership with the Corporate Parenting Panel and the Children in Care Council and has been approved by the Council's Executive. It is our promise to help you to be healthy, stay safe, enjoy and achieve, make a positive contribution and achieve economic well-being.

The Corporate Parenting Panel

This is where elected members and directors from Central Bedfordshire Council meet to monitor and ensure the well being of Children in Care and Care Leavers.

The CiCC

The Children in Care Council (CiCC) is a group of children and young people who are in the care of Central Bedfordshire Council. The CiCC meet on a regular basis to discuss the issues that affects the lives of Children in Care in Central Bedfordshire. The CiCC will then report back to members of the Corporate Parenting Panel who are able to act on this information.

If you would like to take part in The CiCC meetings or activities which are arranged throughout the year please contact **Marie Short – 0300 300 4881**

Central Bedfordshire's Pledge to Children and Young People in Care

We will try our best to make your time in care safe and enjoyable and give you opportunities to have fun. We will meet your religious and cultural needs and give you opportunities to meet with other people who share your lifestyle.



We will involve you in decisions that are being made about you, help you to express your views about things which are important to you and make sure that you know why you are in care.

You will have a named, qualified social worker and an Independent Review Manager and we shall make sure that you know how to contact them.

We will monitor and review this Pledge with you on a regular basis.

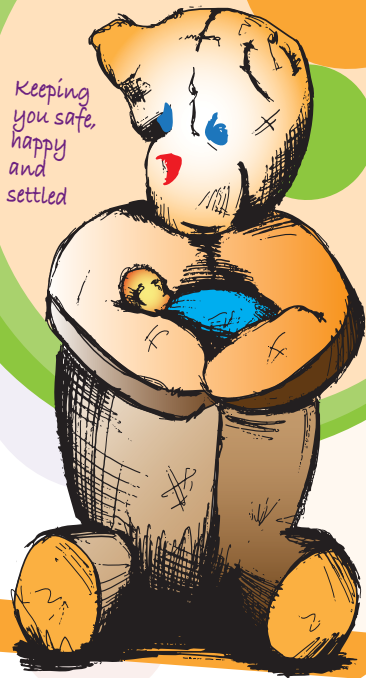
We will help you to Keep Healthy

- We will arrange annual medicals to make sure you are healthy.
- We will offer you the opportunity to take part in activities to help you to stay fit and healthy.
- We will help you to get the health advice you need, make sure that you have the details for local health services and help you to access them.



We will help you to Stay Safe

- We will enable you to stay in contact with family members and friends (if safe to do so) and will include all the details of contact arrangements within your care plan.
- You will be able to contact your named worker and have the contact details for that person and their team. Your worker will return your call as soon as they can and if they are not available, we will make sure that a duty worker contacts you.
- If you want to sleep over at a friend's house, as long as it is safe, we will not insist that a police check is done.
- We will do all we can to keep you safe from bullying.



**We will help you to be able to
Enjoy and Achieve**

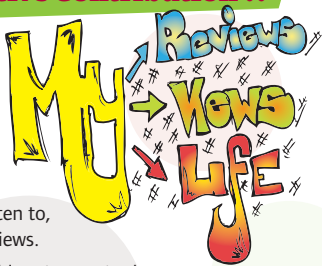


*Enjoying
and
Achieving*

- We will help you to complete your education; we will not ask you to move schools in year 10 or 11 unless the circumstances are very exceptional and if so, we will help you to do so.
- We will encourage and support you to continue with your hobbies and interests.
- We will organise social events throughout the year so that you can meet up with other children and young people in care and social workers.
- We will celebrate your achievements through positive praise from those who work with you and awards ceremonies, and we will highlight your achievements through newsletters.
- We will support you to revise for your exams and to help you to access higher education.

We will help you to be able to Make a Positive Contribution ..

- We will make your Reviews and Care Plans including Pathway Plans clear, include you in discussions and listen to, and respect your views.
- We will involve children in care in the recruitment and training of social workers so that your experience helps us.
- You will be offered the support of an advocate or independent visitor when you initially move to a placement and regularly after that, so that there is someone for you to speak to and help you when you need them.
- We will seek your views about our services through annual questionnaires.
- We will develop a Peer Mentoring Scheme to enable children in care and care leavers to talk to each other and to offer support.



We will help you to Achieve Economic Well Being ...

- We will help and support you to move into independence, and teach you the skills you need to make a successful transition.
- We will give you opportunities to gain work experience.
- We will support you to gain a job or training and ensure that you have an allocated Connexions Personal Adviser.



Achieving Economic
Well-Being

Central Bedfordshire in contact

Për Informacion

للمعلومات

सहावती लसी

برای اطلاع

Per Informazione

معلومات کے لئی

Informacja

Za Informacije

তথ্যের জন্য



on the telephone
0300 300 8000



by email
customer.services@centralbedfordshire.gov.uk



on the web
www.centralbedfordshire.gov.uk